



Child Care  
Resource and  
Referral Network

# Child Care Resource and Referral Services



Amy N. Marine



Benjamin Flick

# MEET OUR TEAM



Heather Campbell – Family  
Engagement Specialist



Jennifer Lee- Community  
Engagement Specialist



Kristi Burkhart – Director



Allissa Theisz – Community  
Engagement Specialist



Trisha Guinn – Program  
Resource Navigator

# Local Child Care Resource and Referral Services Provider Map

**SDA 1 - Geminus**

<http://ccrr.geminus.org/CCRR-Index.html>  
 Phone: 218-685-1500  
 elc@geminus.org

**SDA 2 - The Child Care Resource Network**

[www.thechildcareresourcenetwork.org](http://www.thechildcareresourcenetwork.org)  
 Phone: 765-742-7105  
 Toll Free: 800-932-3302  
 Info@thechildcareresourcenetwork.org

**SDA 3 - Child Care Answers**

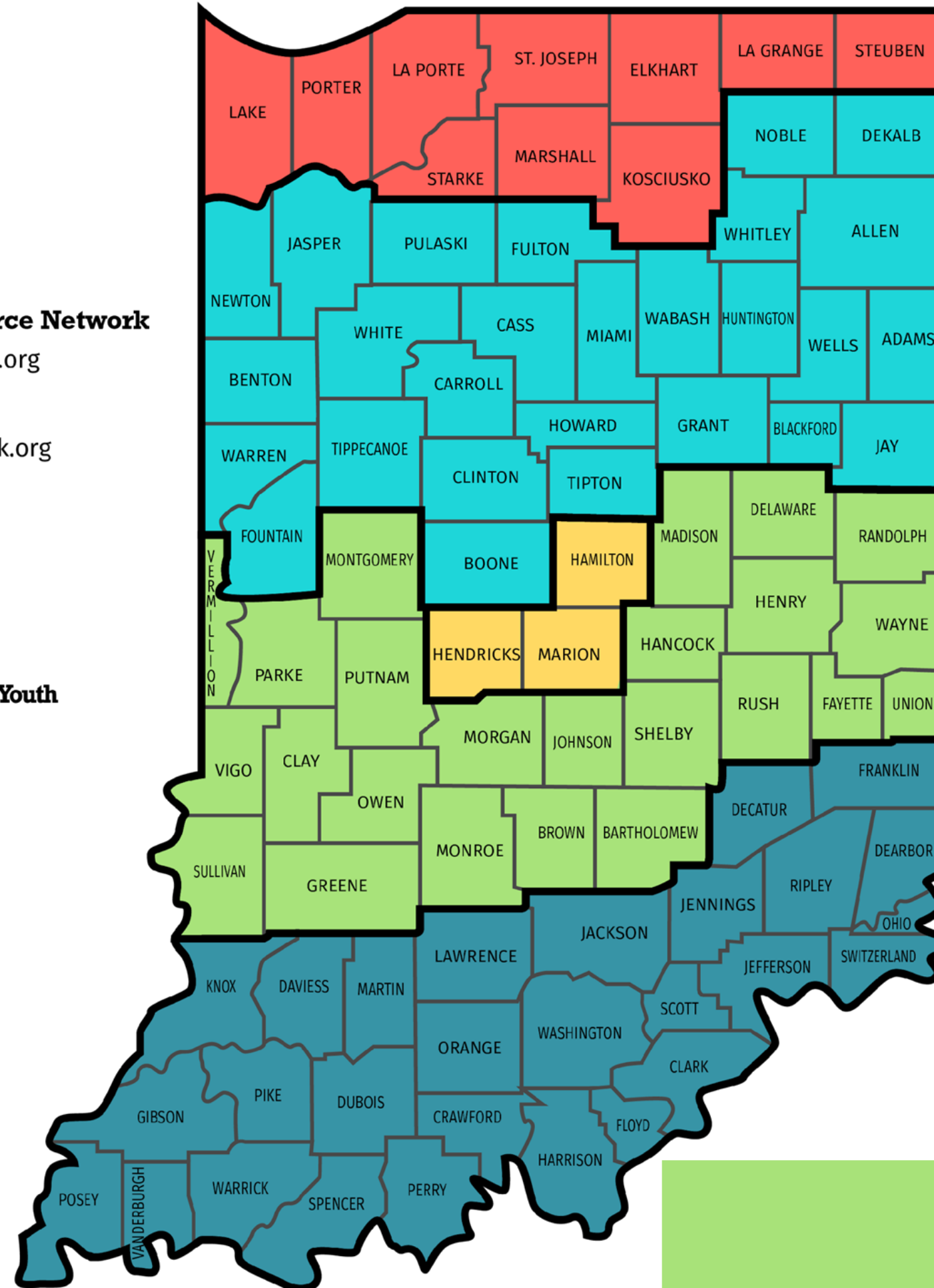
<https://childcareanswers.org>  
 Phone: 317-636-5727  
 Toll Free: 800-272-2937  
 info@childcareanswers.org

**SDA 4 - Chances and Services for Youth**

<http://casonline.org/>  
 Phone: 812-232-3952  
 Toll Free: 800-886-3952  
 CCRR@casonline.org

**SDA 5 - Building Blocks**

[www.buildingblocks.net](http://www.buildingblocks.net)  
 Phone: 812-423-4008  
 Toll Free: 866-200-5909  
 info@buildingblocks.net





# Our Mission

To strengthen Indiana's local early care and education infrastructure by connecting families to quality care, supporting providers, building capacity and engaging community leaders as advocates for high-quality, affordable early care and education.



# How we support Indiana families



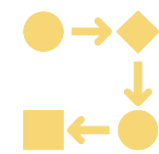
Child care program  
connection



Connect to  
financial assistance



How to choose high quality  
care



Enhanced  
services



Family Resource  
Navigator

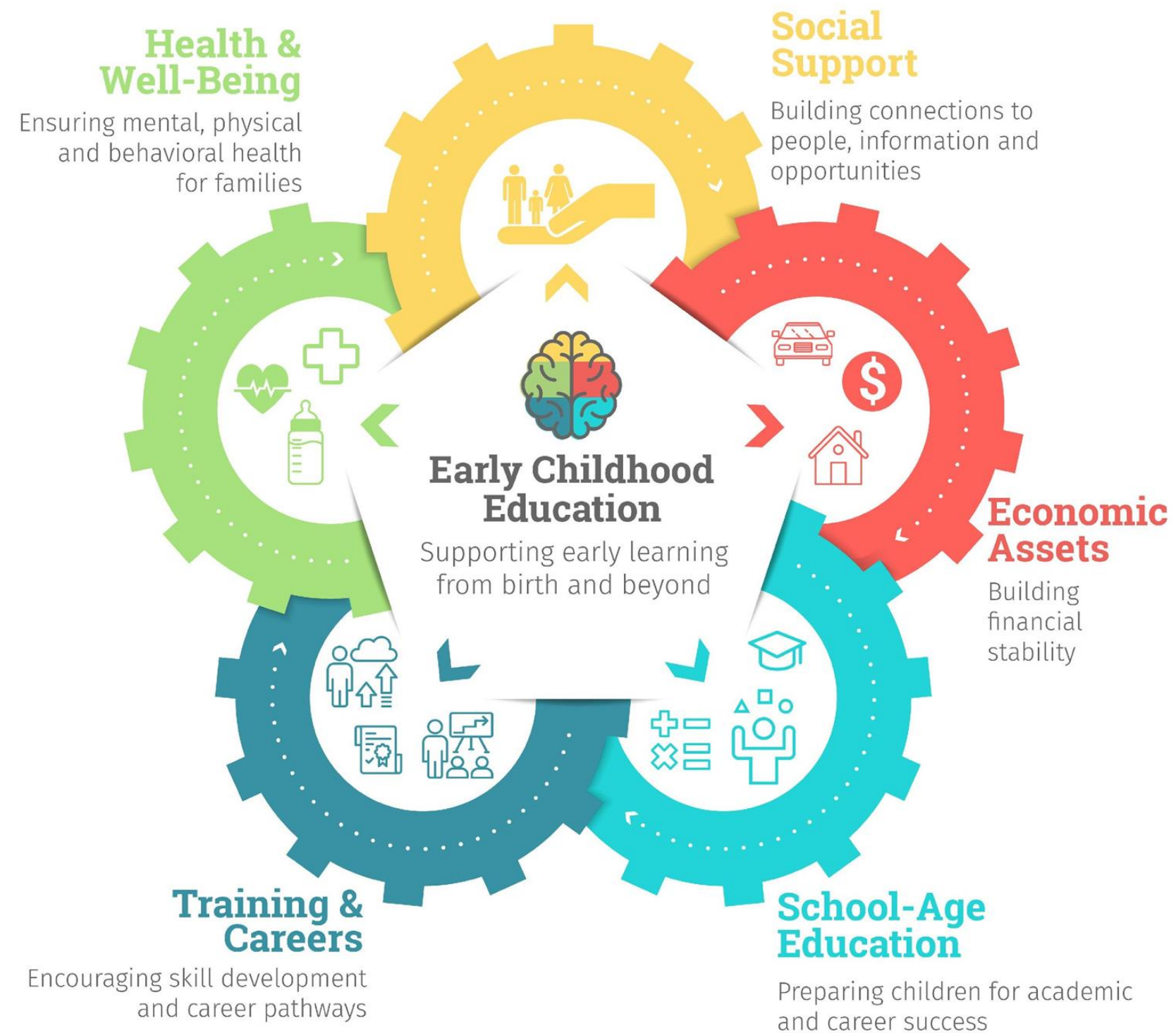
# Connecting Families. Fast.

Families thrive when they are healthy, happy and supported. When families face barriers to meeting their basic needs – financial, health or social – they need to find help fast.





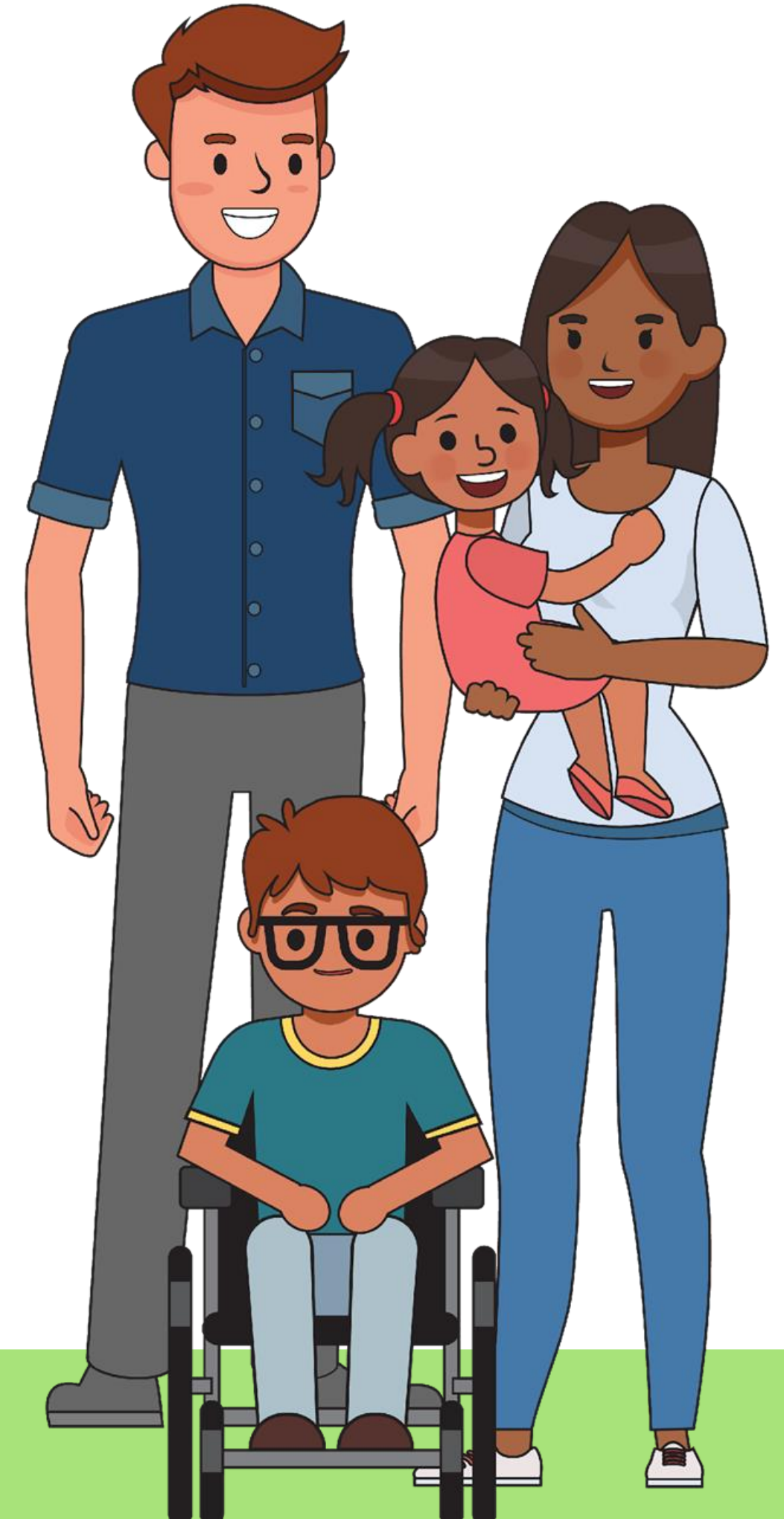
<https://brighterfuturesin.findhelp.com/>



# Bonus Resources for Organizations

There are free efficiency and impact tools for you to use once you join:

- Program claiming and management
- Screening and referral processing
- Availability and appointment scheduling
- Analytics and reporting
- Support from the findhelp team





# Claiming Your Card



- Visit <https://brighterfuturesin.findhelp.com/claims> and put in the information for your program to search for it in the resource bank
- If your program pops up, click on it and then click the “Work here? Manage listings!” link in the top right corner of the screen
- If your program does not pop up, suggest it by scrolling to the bottom of the page and pressing “Suggest Program” in the bottom right and fill out the information for your program
- Create your free account using your work email and watch for an email from the FindHelp team with the subject “Validate your claim,” along with a claim verification link

# How we support child care professionals



Training &  
Support



Knowledge



Connections

# Family Child Care Networks (FCCN)



Supportive Community



Innovative Resources



Professional Growth



Networking



Recognition



Impact

**GROW WITH US!**



# How we connect with community leaders



Awareness



Business/Employer  
support



Build partnerships



Early Learning  
Coalitions



Data

# Local Data

Morgan County



# Need & Capacity

Children 0-5  
Who May Need Care

2909

Maximum Licensed  
Capacity

1499

Percent of Children  
Able to be Served by  
Licensed Capacity

51.5%



# Licensed and Regulated Programs

Number of  
Programs

32

Programs with Non-  
Traditional  
Hours

4

Programs with  
Weekend Hours

1

# Quality

Number of High  
Quality Programs

5

High Quality Licensed  
Capacity

160

Percent of High  
Quality Capacity

10.7%



# How does this affect your business?

- Indiana's economy loses **\$2.2 billion** each year due to lack of infant and toddler care.
- Morgan County loses and estimated **\$61 million** each year due to lack of infant and toddler care. (ELI)
- **41%** of parents of infants and toddlers report having to turn down a new job offer due to child care problems.
- **85%** of primary caregivers said problems with child care hurt their efforts or time commitment at work.
- Almost **two-thirds** of parents of infants and toddlers facing child care struggles report being late for work or leaving work early, and more than half report being distracted at work or missing full days of work.

*ReadyNation (2023, January). \$122 Billion: The Growing, Annual Cost of the Infant-Toddler Child Care Crisis.*





# How we support employers

- Provide onsite referrals
- Compose and Evaluate Employee need surveys
- Evaluate and compose family friendly policies
- Tuition Support
- Local Program Partnerships
- On-site Child Care Services
- Back Up Child Care Spots
- Inform grant opportunities

Employee turnover costs 33% of a worker's total compensation — including income and benefits — to replace them.

---

33%

# Family Friendly Policies

- Flexible paid time off and work schedules
- Work-from-home options and phased-in work hours for parents returning from maternity/paternity leave
- The importance of lactation rooms, and exploring bringing your baby to work
- Flexible spending accounts for dependent care that allow for tax-free contributions up to \$5,000
- Partner with nearby or local childcare providers (regular and sick)
- Partner with nearby or local childcare providers to pay a percentage of childcare costs
- Evaluate operating hours and available childcare providers during those hours



For **EVERY \$1** invested in comprehensive birth-to-5 early learning services, **\$13** is **RETURNED** to communities.



*García, Jorge Luis, James J. Heckman, Duncan Ermini Leaf, and María José Prados. "The Life-cycle Benefits of an Influential Early Childhood Program." (2016)*



A person is holding a large white rectangular sign in front of their chest. The sign has the text "WHAT CAN YOU DO?" written on it in a bold, dark grey, sans-serif font. The person is wearing a light blue short-sleeved shirt and light-colored cargo pants. The background is a solid teal color.

**WHAT CAN  
YOU DO?**

- **Refer people to us if they need child care or other resources**
  - *CASY: Toll Free: 800-866-3952, option*
- **Refer Employers to us to discuss anything child care**
- **Claim your card on FindHelp.org**
- **Refer families who need financial assistance for child care to apply online and contact Firefly Children & Family Alliance with any questions**
  - [earlyedconnect.org](http://earlyedconnect.org)
  - *Toll-Free: 866-287-2420*
  - *Email: [ccdfvouchers@fireflyin.org](mailto:ccdfvouchers@fireflyin.org)*
- **Join the Morgan County Early Learning Task Force with the Better Communities Coalition**



# Child Care Resource and Referral Network

# Thank you!

Benjamin Flick

Community/Family Engagement Specialist

Chances and Services for Youth

[bflick@casyonline.org](mailto:bflick@casyonline.org)

812-231-8906

Amy N. Marine

Family Engagement Specialist

Chances and Services for Youth

[amarine@casyonline.org](mailto:amarine@casyonline.org)

812-231-8917