



Morgan County **COURTHOUSE RENOVATION**

Informational Meeting



New Judicial Campus – Opening This Summer!



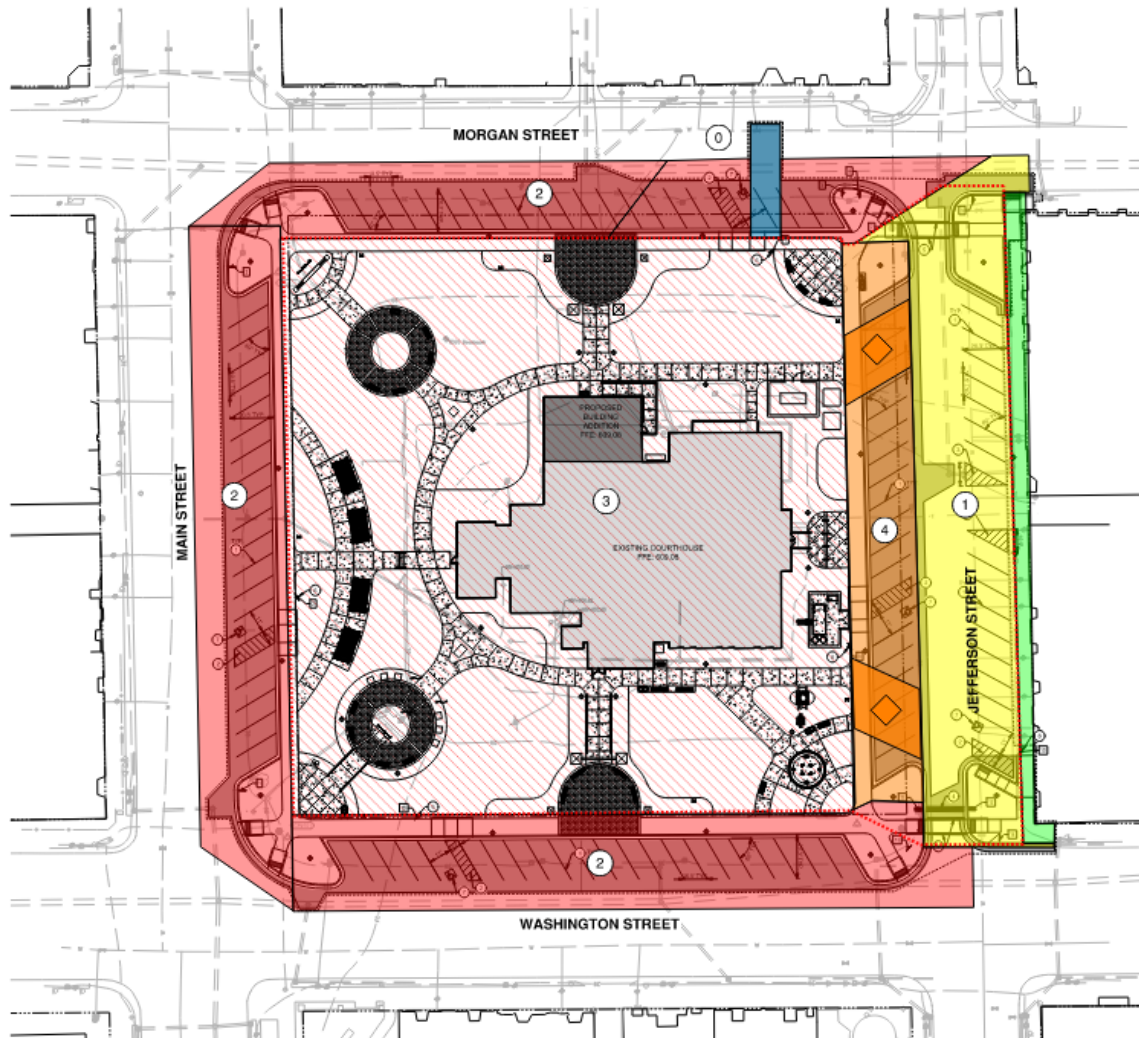
- Grand opening: July 2, 2025
- New building:
 - App. \$46M of \$72M total project cost
 - 71,800 ft² over three floors
 - 40 restrooms
 - New 60,000 ft² parking lot
- All employees and offices in current Courthouse will be moved in by end of July

Existing Courthouse



- Currently houses six courts, plus support staff
- Complete interior renovation from summer 2025 to late 2026
- Exterior renovation includes reconfigured parking, new sidewalks, ADA-compliant ramps and curbs
- Once complete, it will house professionals working in the Administration Building and several other buildings around downtown

Preferred Exterior Phasing Plan



PHASING

-  **PHASE 0**
June 2025 Start
-  **PHASE 1**
July 2025 Start
-  **PHASE 2**
August 2025 Start
-  **PHASE 3**
August 2025 Start
-  **PHASE 4**
Fall 2026 Start

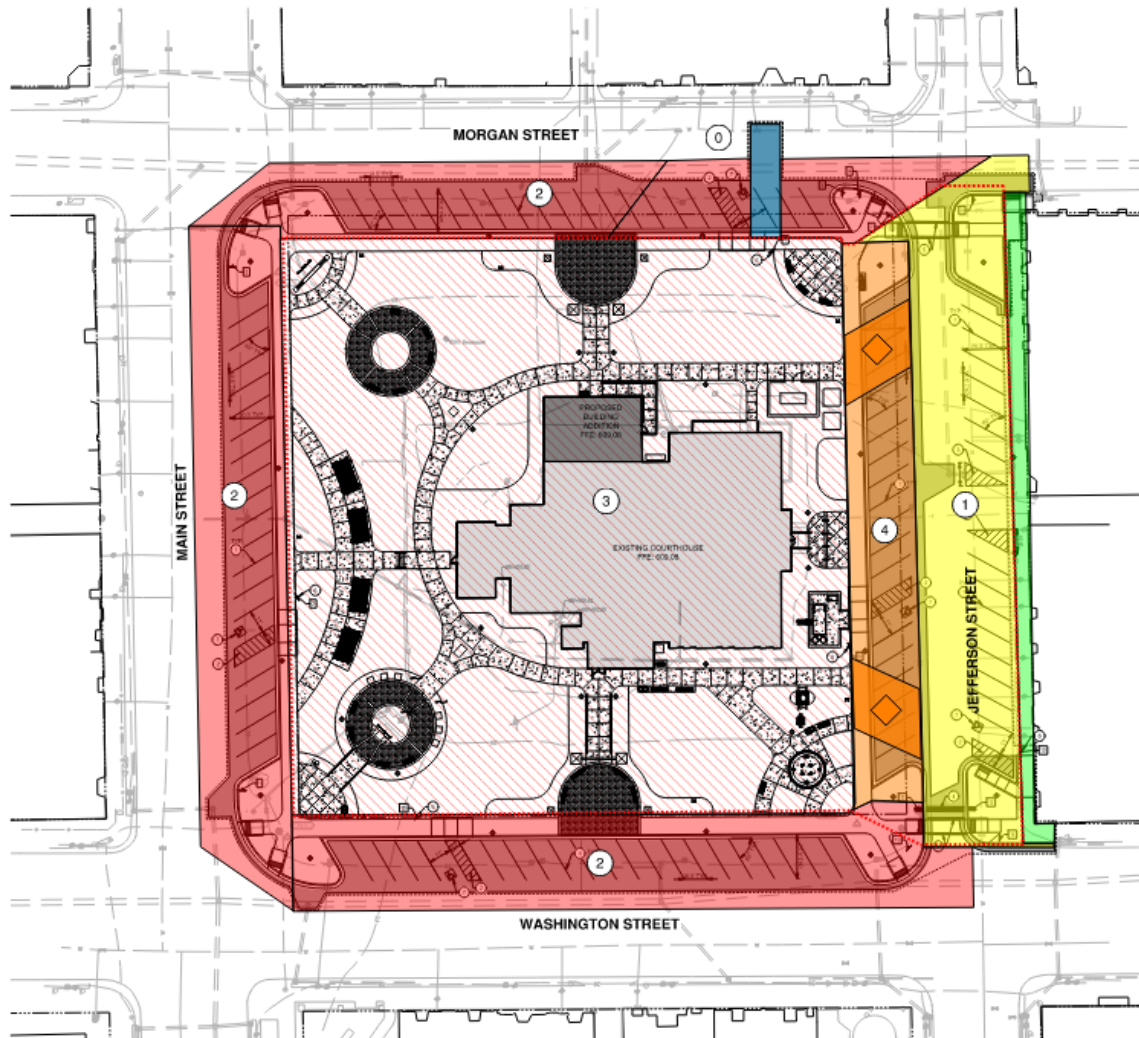
DRAWING SYMBOLS

-  TEMPORARY CONSTRUCTION ENTRANCE
-  SIDEWALK OPEN TO PUBLIC
-  TEMPORARY JOBSITE FENCE

Jefferson Street:

- Mid-July – Begin utility and road work (4 weeks)
- August - Open southbound Jefferson and diagonal parking on the east side
- 23 parking spaces (3 new)
- West side new parking will be closed until Fall 2026
- Sidewalk will remain open during road work
- South end of sidewalk will close for two days to pour new curb and sidewalk extension (north end open)

Preferred Exterior Phasing Plan



PHASING

-  **PHASE 0**
June 2025 Start
-  **PHASE 1**
July 2025 Start
-  **PHASE 2**
August 2025 Start
-  **PHASE 3**
August 2025 Start
-  **PHASE 4**
Fall 2026 Start

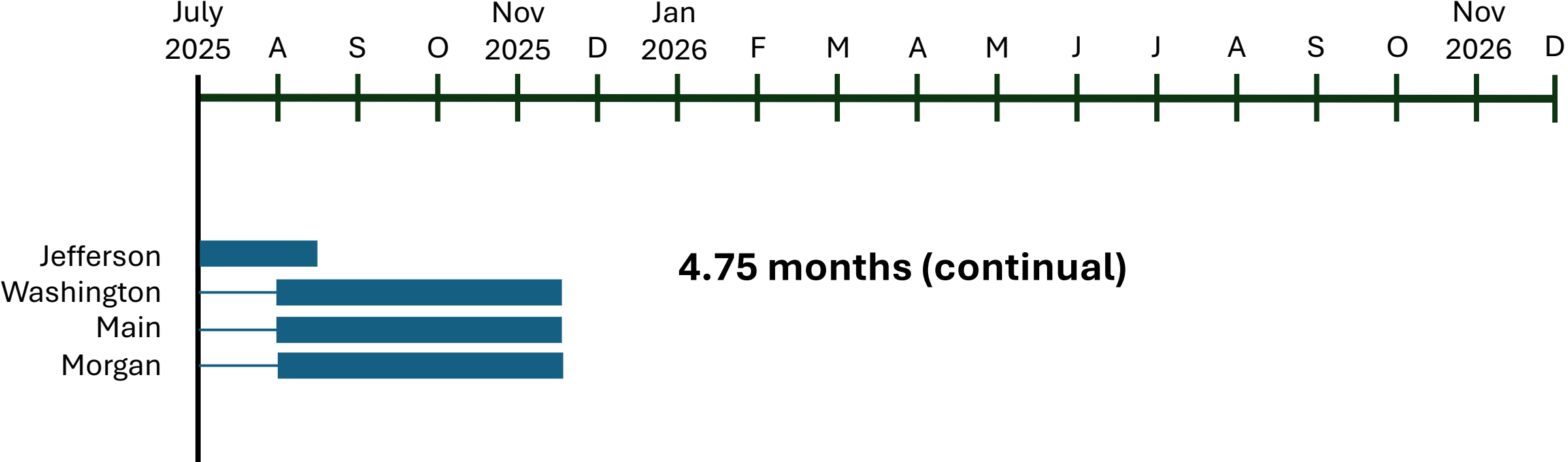
DRAWING SYMBOLS

-  TEMPORARY CONSTRUCTION ENTRANCE
-  SIDEWALK OPEN TO PUBLIC
-  TEMPORARY JOBSITE FENCE

Morgan, Main and Washington Streets:

- Work begins after Jefferson reopens (16 weeks)
- One lane will be closed on each street, allowing one-way traffic
- Open by Thanksgiving 2025:
 - Parking spaces
 - Sidewalks
 - Signage
 - ADA ramps
 - 67 parking spaces (2 new)

Preferred Phasing Plan Impact Schedule



Preferred Exterior Phasing Plan – Public Parking



LEGEND



OPEN DURING ALL PHASES
42 SPACES



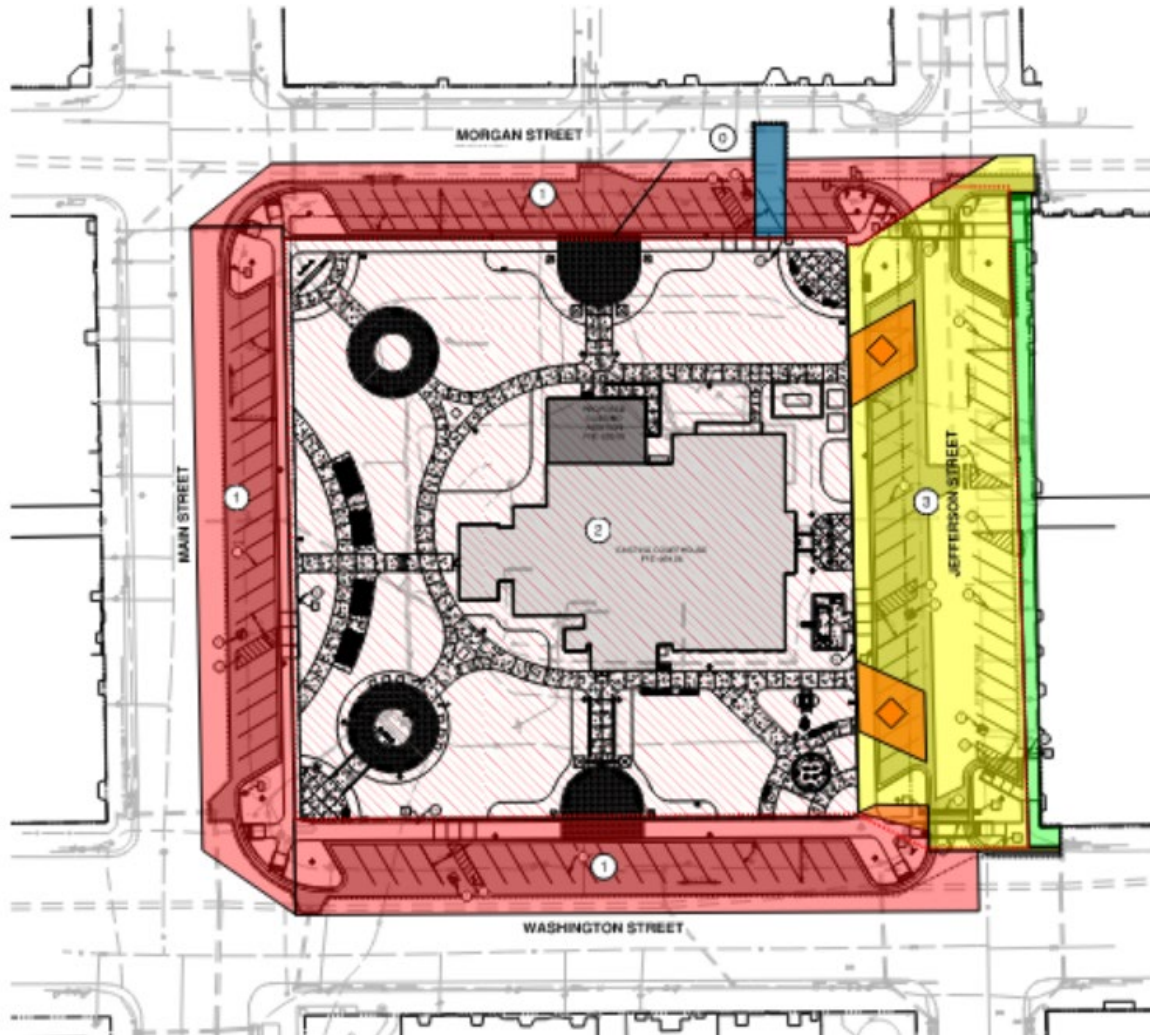
OPEN DURING PHASE 1
26 SPACES



OPEN AFTER PHASE 2
63 SPACES

OPEN AFTER PHASE 1
23 SPACES

Alternate Exterior Phasing Plan #1



PHASING

-  PHASE 0
June 2025 Start
-  PHASE 1
August 2025 Start
-  PHASE 2
August 2025 Start
-  PHASE 3
Fall 2025 Start

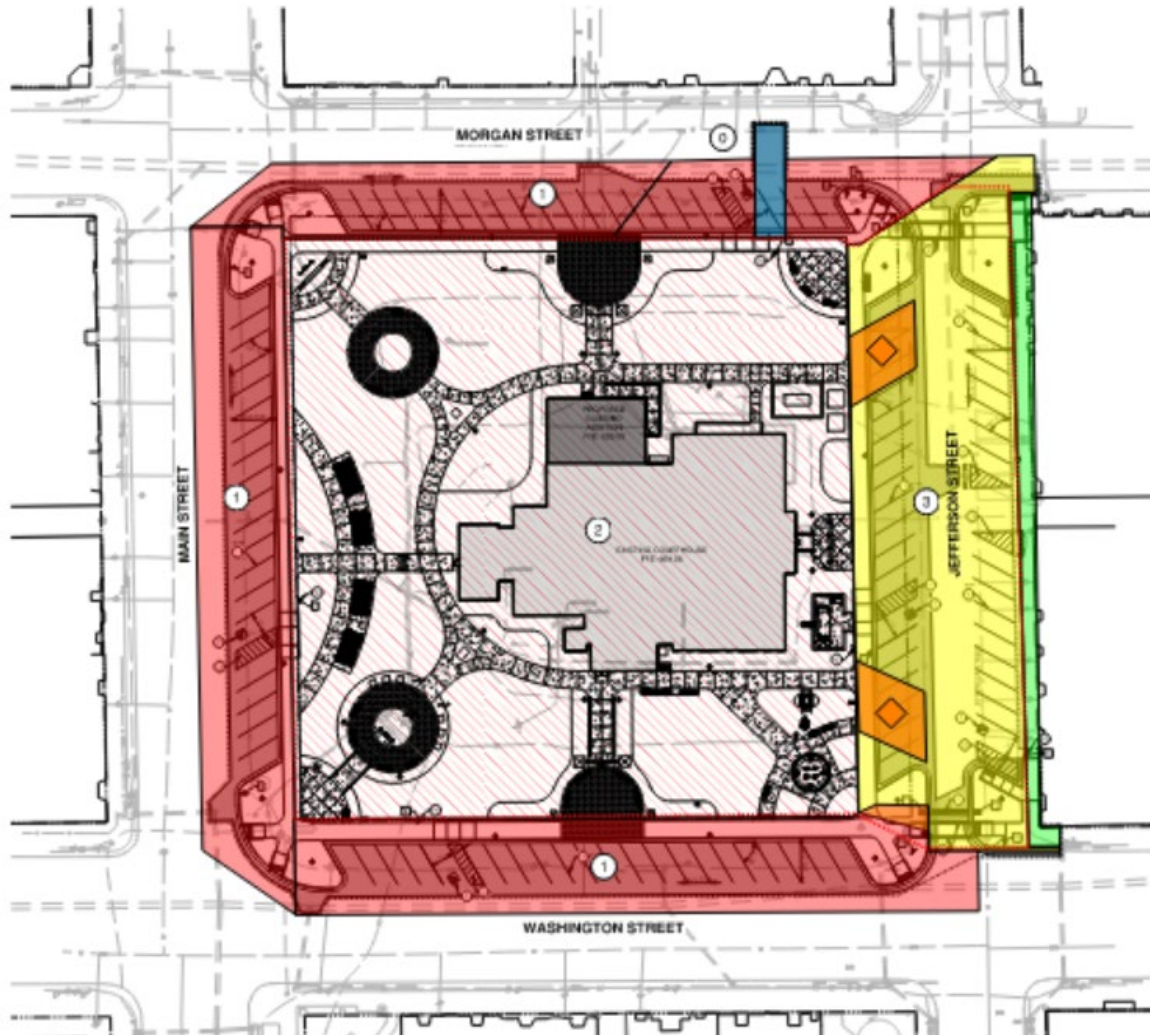
DRAWING SYMBOLS

-  TEMPORARY CONSTRUCTION ENTRANCE
-  SIDEWALK OPEN TO PUBLIC
-  TEMPORARY JOBSITE FENCE

Morgan, Main and Washington Streets:

- August 2025 – Begin utility and road work (16 weeks)
- Open by Thanksgiving 2025:
 - Parking spaces
 - Sidewalks
 - Signage
 - ADA ramps
 - 67 parking spaces (2 new)
- One-lane closure of Morgan, Main, and Washington Streets during construction

Alternate Exterior Phasing Plan #1



PHASING

-  **PHASE 0**
June 2025 Start
-  **PHASE 1**
August 2025 Start
-  **PHASE 2**
August 2025 Start
-  **PHASE 3**
Fall 2025 Start

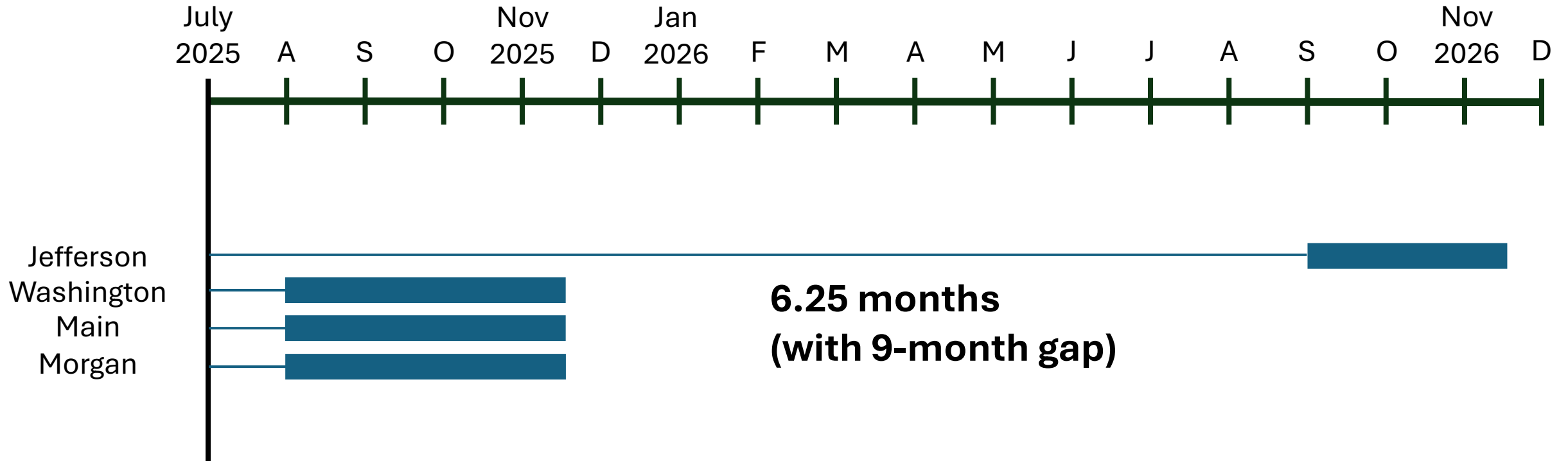
DRAWING SYMBOLS

-  **TEMPORARY CONSTRUCTION ENTRANCE**
-  **SIDEWALK OPEN TO PUBLIC**
-  **TEMPORARY JOBSITE FENCE**

Jefferson Street:

- Fall 2026 – Utility and road work (8 weeks)
- Begins after Main, Morgan and Washington are open
- Parking open on southbound Jefferson and in east existing parking (10 spaces)
- Sidewalk will remain open
- South end of sidewalk will close for two days to pour new curb and sidewalk extension (North end open)

Alternate Phasing Plan #1 Impact Schedule



Alternate Exterior Phasing Plan #1 – Public Parking



LEGEND



OPEN DURING ALL PHASES
42 SPACES



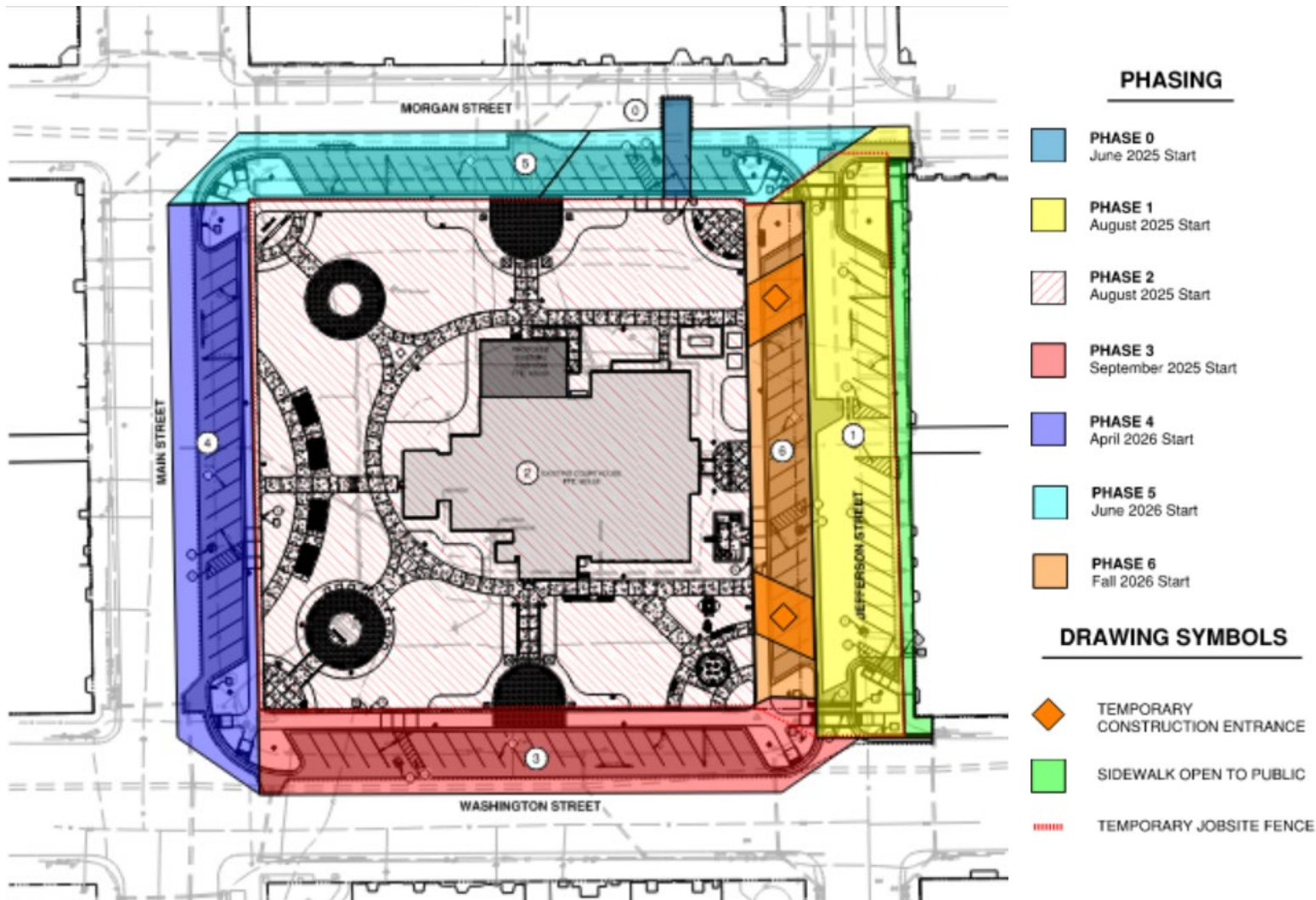
OPEN DURING PHASES 1 & 2
10 SPACES



OPEN AFTER PHASE 3
23 SPACES

OPEN AFTER PHASE 1
63 SPACES

Alternate Exterior Phasing Plan #2



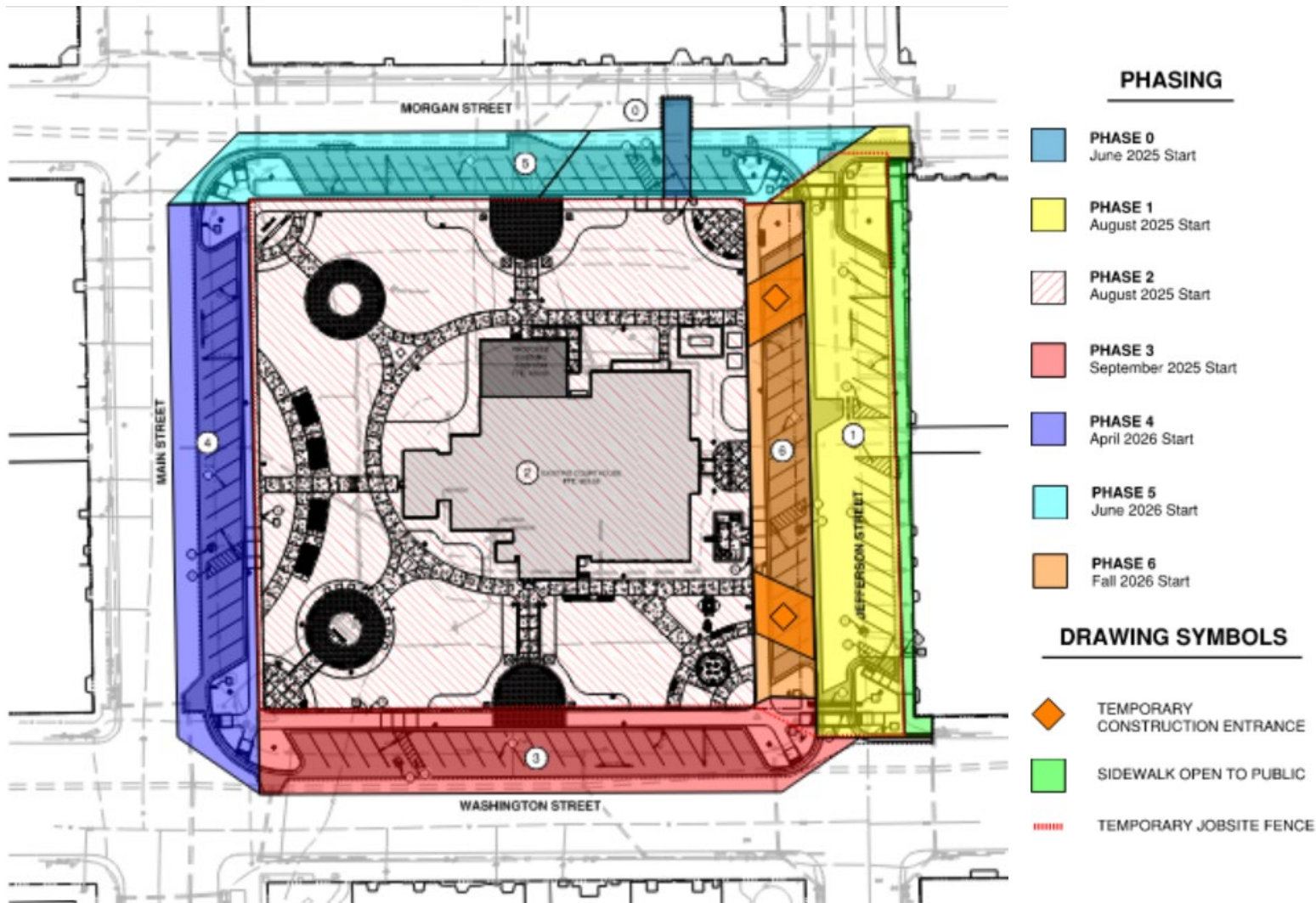
Jefferson Street (East):

- August 2025 – Begin utility and road work (4 weeks)
- October 2025 - Open half of Jefferson and diagonal parking on the east side

Jefferson Street (West):

- Late July 2026 – Begin utility and road work (4 weeks)
- September 2026 - Open one lane of Jefferson

Alternate Exterior Phasing Plan #2



Washington Street:

- October 2025 – Begin utility and road work following completion of Jefferson Street (6 weeks)
- One-lane closure of Washington Street during construction

Main Street:

- April 2026 – Begin utility and road work as spring weather allows (6 weeks)
- One-lane closure of Main Street during construction

Morgan Street:

- Late May 2026- Begin utility and road work following completion of Main Street (6 weeks)
- One-lane closure of Morgan Street

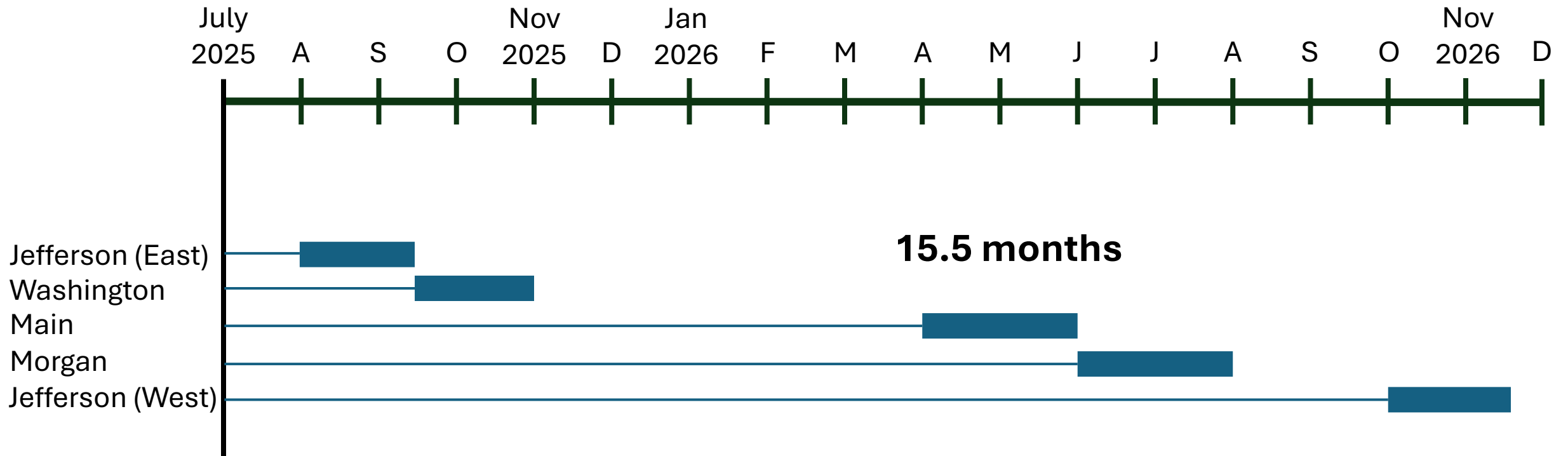
Alternate Exterior Phasing Plan #2 – Public Parking



LEGEND

-  OPEN DURING ALL PHASES
42 SPACES
-  OPEN DURING PHASES 1 & 2
10 SPACES
-  OPEN AFTER PHASE 3
22 SPACES
-  OPEN DURING PHASES 1 - 3
11 SPACES
-  OPEN AFTER PHASE 4
20 SPACES
-  OPEN DURING PHASES 1 - 4
9 SPACES
-  OPEN AFTER PHASE 4
21 SPACES
-  OPEN AFTER PHASE 1
17 SPACES
-  OPEN AFTER CONSTRUCTION
20 SPACES

Alternate Phasing Plan #2 Impact Schedule



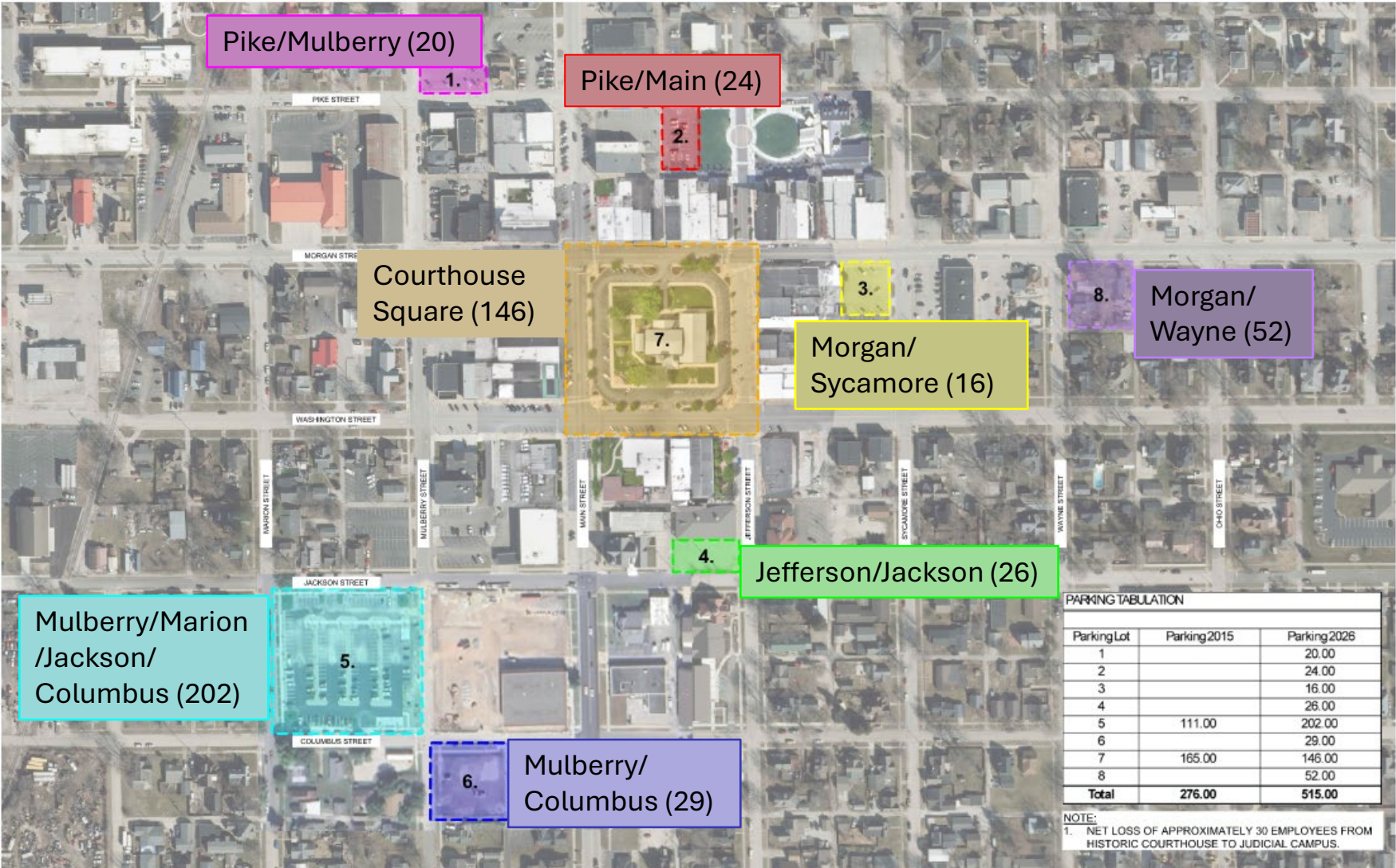
Contractor Parking



What to know:

- Contractors MAY NOT park in public parking during Courthouse renovation
- Contractors MAY park in lots at:
 - 214 N. Main Street, designated by the City
 - New lot at 69 W Columbus Street, south of the new Judicial Campus
- Inside site limits and only using designated construction entrances shown on the phasing plan

Downtown Parking Inventory (2026)



MORGAN COUNTY HISTORIC COURTHOUSE

Martinsville, IN

April 4, 2025

Parking Study



Thank you!

Please direct questions to
County Administrator Josh Messmer at
(765) 342-1007 or jmessmer@morgancounty.in.gov.